

project name	New Terminal for Group And Cruise Passengers		
	Aircraft fueling design		
owner	Puerto Rico Ports Authority (Puerto Rico)		
client / architect	MGAA –Manuel Goicoechea Associates Architects, Carolina (Puerto Rico)		
location	International Airport Luis Muñoz Marín, Carolina (Puerto Rico)		
project duration	design	begin	april 2003
		end	october 2004
	redesign	begin	may 2007
		end	october 2007

The Puerto Rico Ports Authority plans to increase the airport's annual capacity up to 10 million and to build a new terminal for group and cruise passengers.



curbside, new terminal for group and cruise passengers (mgaa), fuel pits detail

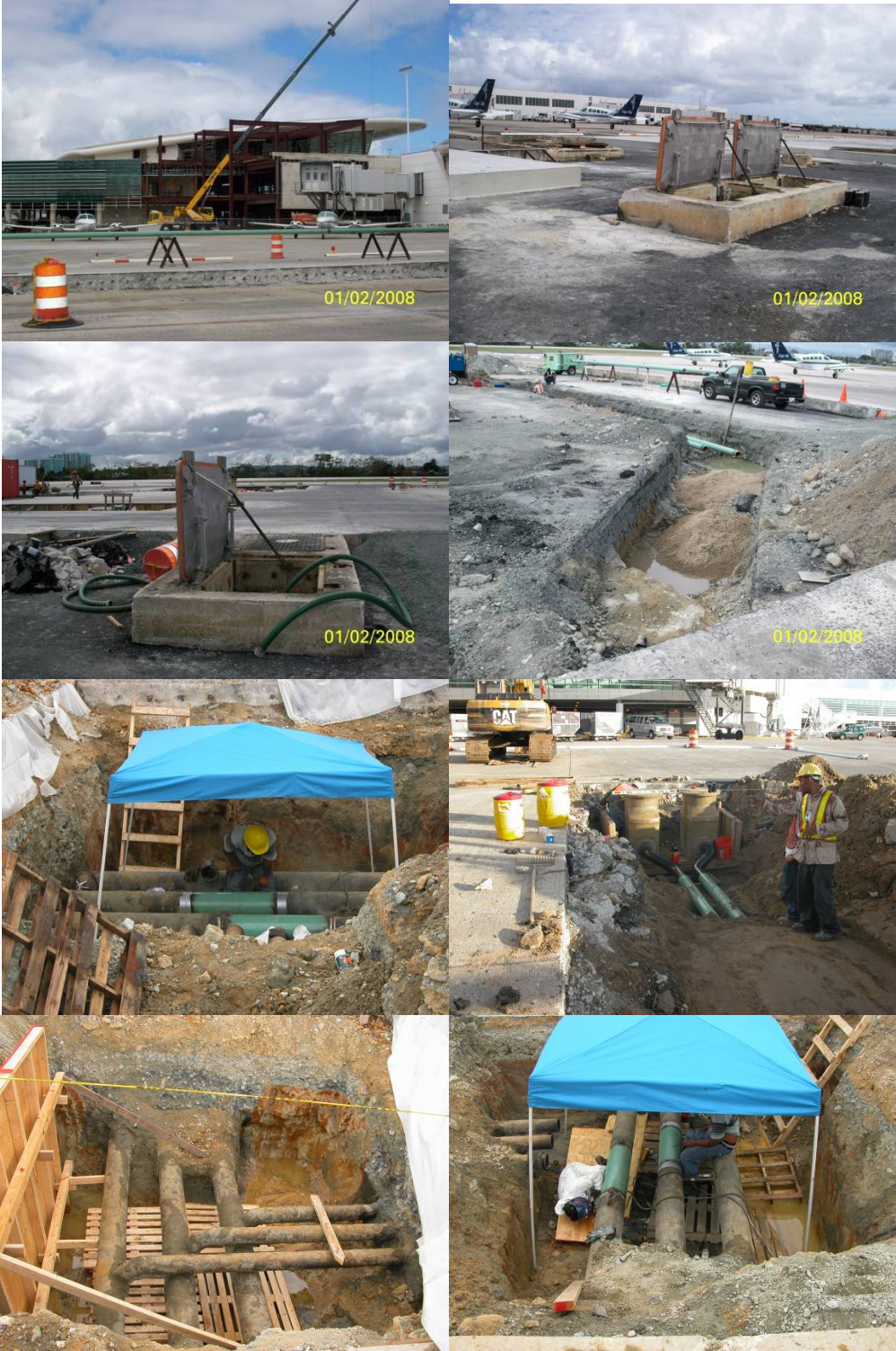
responsibilities

design and redesign, specification writing, tender assistance, acceptance of Contractor's submittals for aircraft fuel supply:

- dismantle of existing fuel pits and relocation of 21 new ones
- buried pipe works 6" and 4", including cathodic corrosion protection
- rehabilitation of valve pits

industry + production featured projects

photographs 1



fuel pipe laying DN 150 (6 in) (t l), existing isolation pit to be rehabilitated (t r, 2nd l), fuel pipe laying DN 100 (4 in) (2nd r), dismantle of existing lateral fuel lines (3rd l), new fuel pits (3rd r), fuel laterals (d l), repair works (d r)

industry + production
featured projects



photographs 2



apron and new domestic terminal aerial view (d) ©QB Construction and AAPA Aerial / Architectural Photography, Inc.

industry + production
featured projects



energy + power
water + sanitation
agriculture
industry + production
building services

photographs 3



apron and new domestic terminal aeral view (d) ©QB Construction and AAPA Aerial / Architectural Photography, Inc.

industry + production
featured projects



energy + power
water + sanitation
agriculture
industry + production
building services